



FARMSPACE SYSTEMS LLC

AN UMANNED AERIAL SYSTEMS COMPANY



BOTTOM LINE UP FRONT(BLUF)

- ✓ FARMSPACE SYSTEMS IS AN UNMANNED AERIAL SYSTEMS DATA COLLECTION AND MANAGEMENT COMPANY OPERATED BY VETERANS
- ✓ *INITIAL FOCUS IS ON AGRICULTURAL OPERATIONS WHERE 80% OF UAS USAGE FORECAST BUT WILL “BLEND IN” NON-AG CONTRACTS AND SALES*
- ✓ FAA CURRENTLY ALLOWS RESEARCH FLIGHT OPERATIONS WITH CERTIFICATE OF AUTHORITY (COA) BY PUBLIC INSTITUTIONS
- ✓ *FARMSPACE CONDUCTS DRONE RELATED RESEARCH FLIGHT OPERATIONS UNDER A FAA COA SPONSORED BY MTSU*
- ✓ FAA CURRENTLY LIMITS COMMERCIAL FLIGHT OPERATIONS TO “SECTION 333” EXEMPTIONS PENDING ISSUANCE OF PERMANENT RULE (EXPECTED MID 2016)
- ✓ *FARMSPACE IS OPERATING UNDER AN APPROVED FAA “333” EXEMPTION RECEIVED 18 AUGUST 2015*
- ✓ OUR MISSION IS TO PROVIDE THE BEST IN UNMANNED AERIAL SYSTEMS DATA COLLECTION AND MANAGEMENT

VETS EXPERIENCED WITH TECHNOLOGY ENABLED EQUIPMENT

*40% OF THOSE
WHO SERVE
COME FROM
RURAL
AMERICA*

*INCREASES
OUR
NATIONAL
SECURITY*

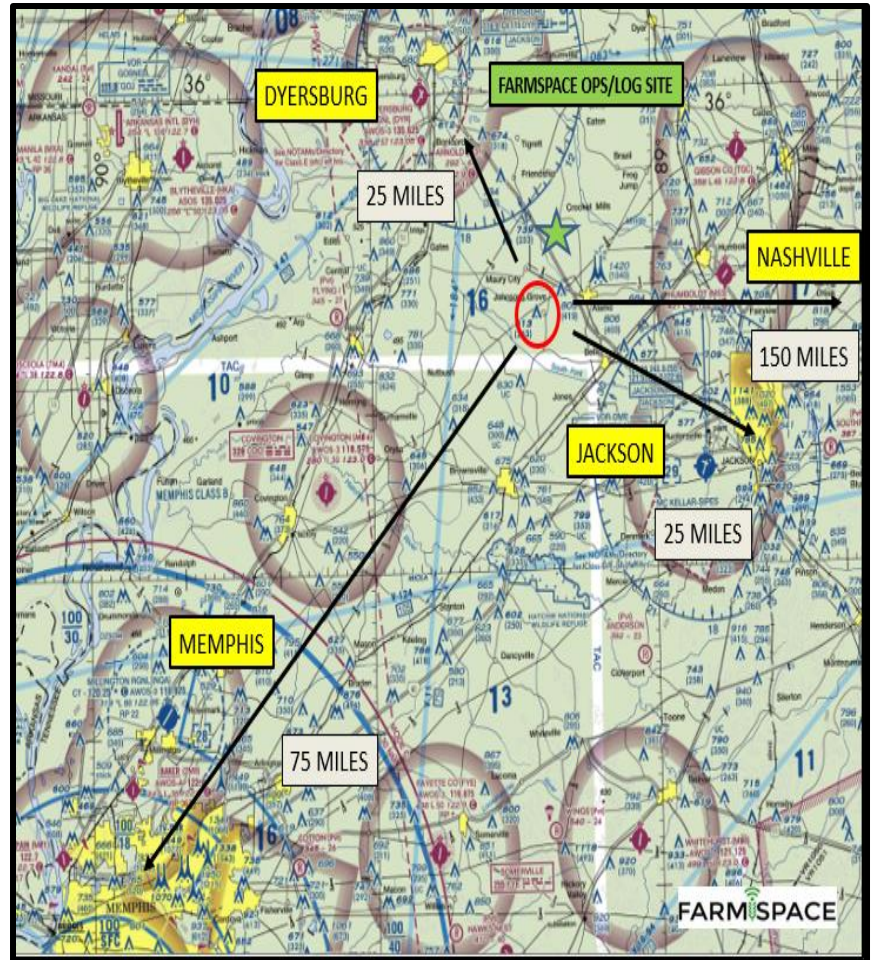
*MUST FEED
TWO BILLION
MORE BY 2050*

*VETS ARE A
KEY TO
ENABLING
PRECISION
AGRICULTURE*



FAA 2014-ESA-117-COA ISSUED TO MTSU/EXECUTED BY FSS

- ✓ FAA APPROVED FOR MTSU WITH FARMSPACE AS RANGE OPERATOR
- ✓ AIRSPACE OVER WORKING FARMS IN INTENSIVE AG AREA (COTTON/CORN/WHEAT/SOYBEANS)
- ✓ CONVENIENT LOCATION CLOSE TO MEMPHIS (1.5 HOURS) & NASHVILLE (2.5 HOURS)
- ✓ LEVERAGE EXISTING RELATIONSHIPS WITH MTSU/UTM/UTIA/ORNL/AG SERVICE COMPANIES
- ✓ FARMSPACE EXPERTISE WITH UAS AND SENSOR SYSTEMS
- ✓ NEARBY EXISTING LOGISTICAL SUPPORT FACILITIES



FAA EXEMPTION NO. 12494

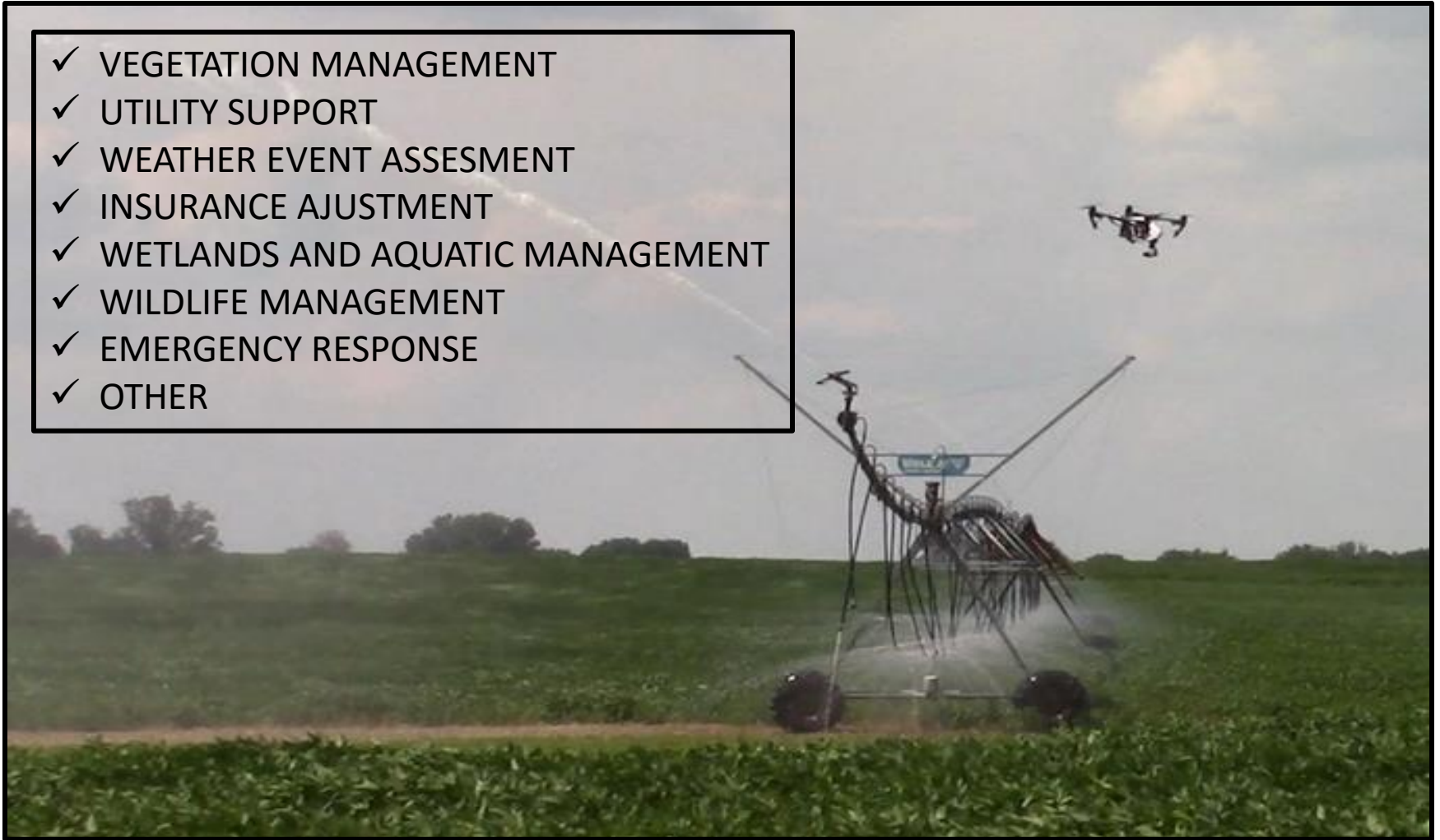
FARMSPACE COMMERCIAL OPERATIONS

- ✓ ISSUED 18 AUG 2015
- ✓ OPERATIONS AUTHORISED NATIONALLY
- ✓ OPERATIONS NOT LIMITED TO AGRICULTURE
- ✓ ABILITY TO MODIFY TERMS OF EXEMPTION TO INCLUDE DIFFERENT AIRCRAFT
- ✓ PROVIDES ANOTHER SPHERE FOR CONDUCTING DEVELOPMENTAL OPERATIONS AWAY FROM RESEARCH RANGE
- ✓ CAN BE USED AS VEHICLE FOR SUBCONTRACTING SERVICES
- ✓ POSITIONS PARTICIPATING PARTIES FOR EXPANDED COMMERCIAL OPERATIONS



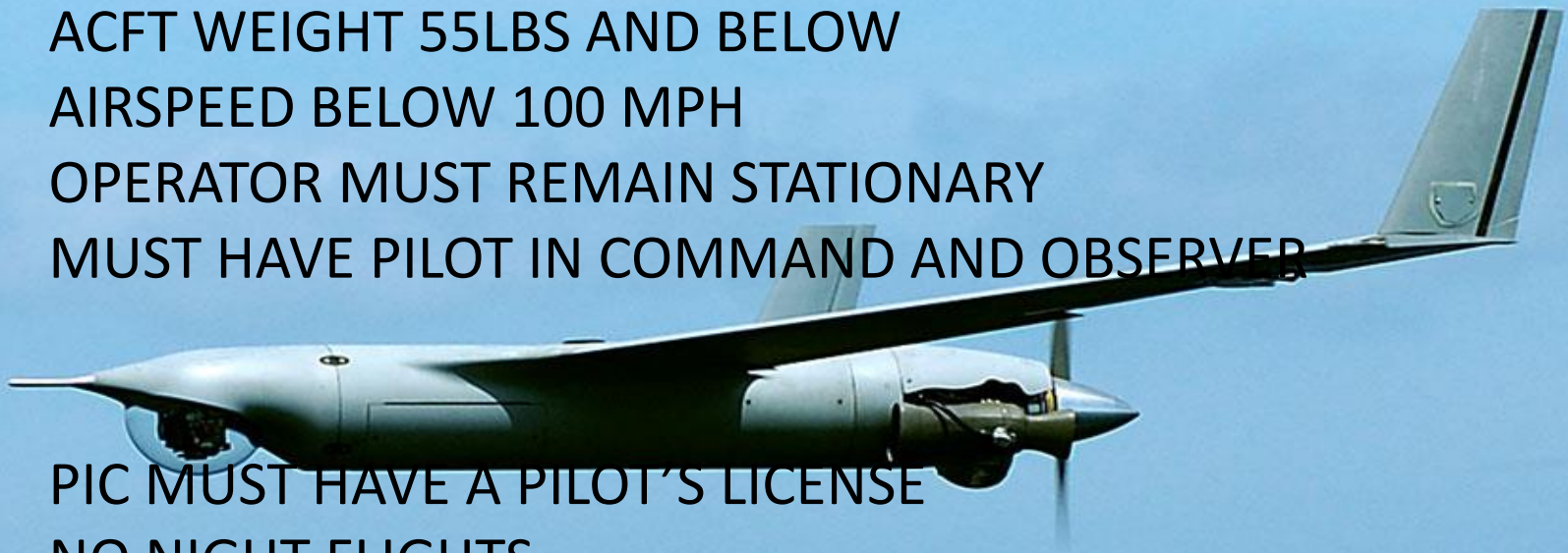
OTHER MISSION SETS

- ✓ VEGETATION MANAGEMENT
- ✓ UTILITY SUPPORT
- ✓ WEATHER EVENT ASSESMENT
- ✓ INSURANCE AJUSTMENT
- ✓ WETLANDS AND AQUATIC MANAGEMENT
- ✓ WILDLIFE MANAGEMENT
- ✓ EMERGENCY RESPONSE
- ✓ OTHER



WHAT ARE THE CURRENT COMMERCIAL RULES?

- OPERATOR MUST MAINTAIN VISUAL LINE OF SIGHT (VLOS)
- ACFT MUST STAY AT OR BELOW 400'
- ACFT WEIGHT 55LBS AND BELOW
- AIRSPEED BELOW 100 MPH
- OPERATOR MUST REMAIN STATIONARY
- MUST HAVE PILOT IN COMMAND AND OBSERVER



- PIC MUST HAVE A PILOT'S LICENSE
- NO NIGHT FLIGHTS
- OBSERVE WEATHER MINIMUMS
- NO FLIGHTS OVER PEOPLE OR GATHERINGS
- IN PLACE UNTIL PERMANENT RULES (2016?)

VEGETATION MANAGEMENT



IMAGERY COLLECTION OPERATIONS

1: GPS Guided UAV



2: Sensor Collects Data

3: Images Transmitted To Cloud and Stitched Into Map



4: The user can log into their account to access and transfer the data



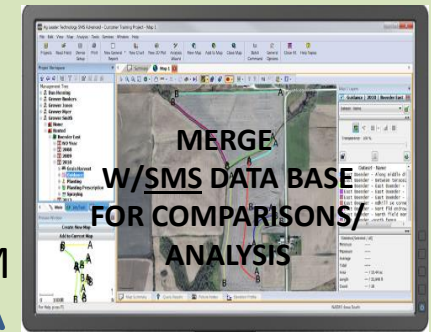
MAP GENERATION (AIRBORNE)



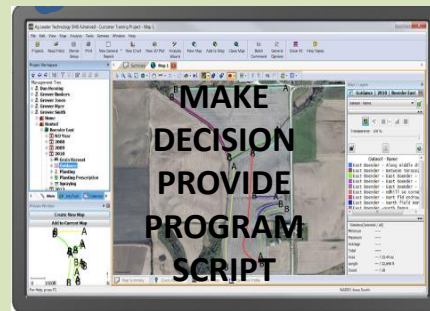
TRANSMIT
AIRBORNE

DRONEDEPLOY
STITCH IN
CLOUD

DOWNLOAD
TO PLATFORM



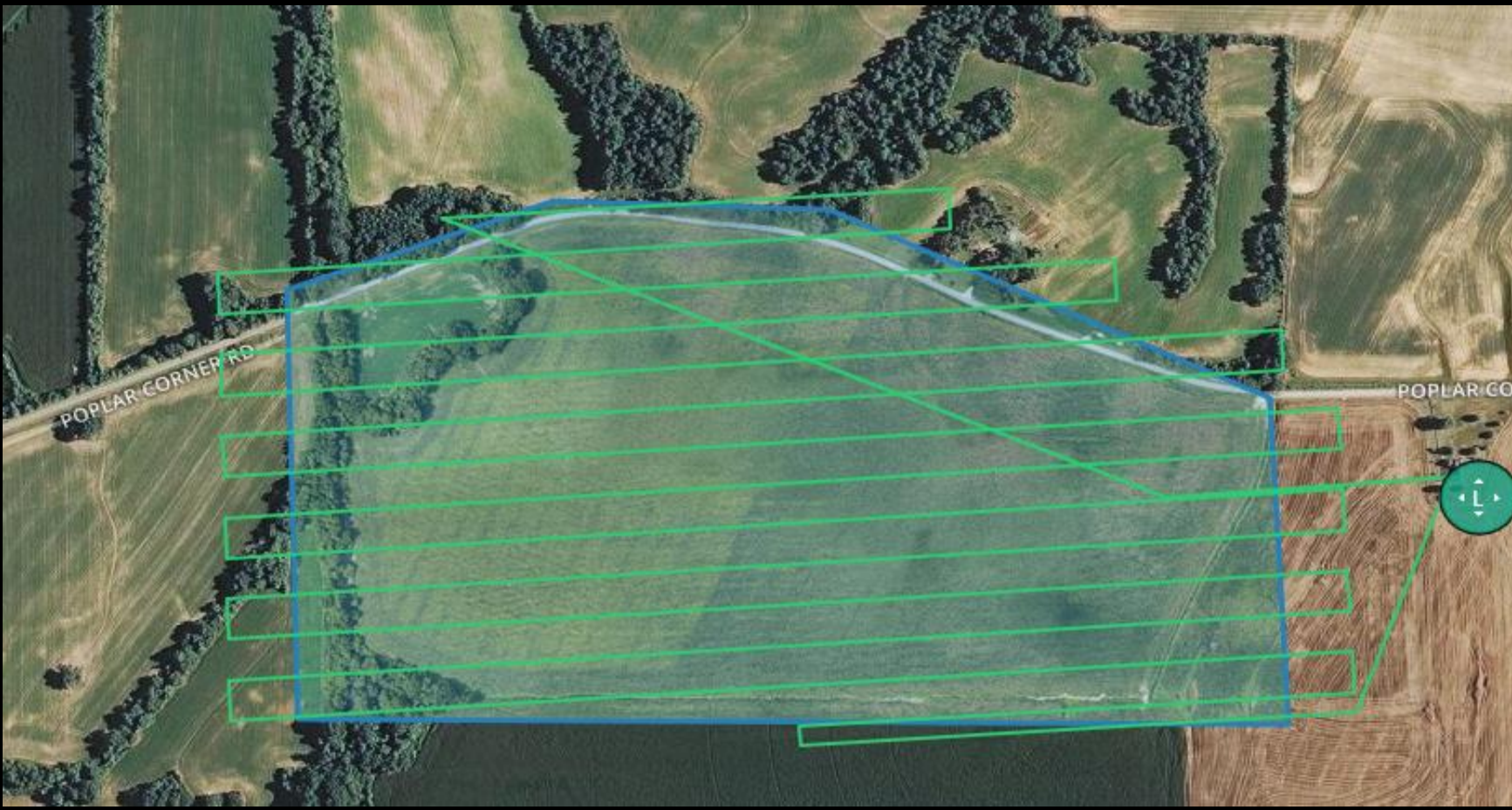
EXPORT
SCRIPT



RESULTS
INPUTED
AND COMPARED



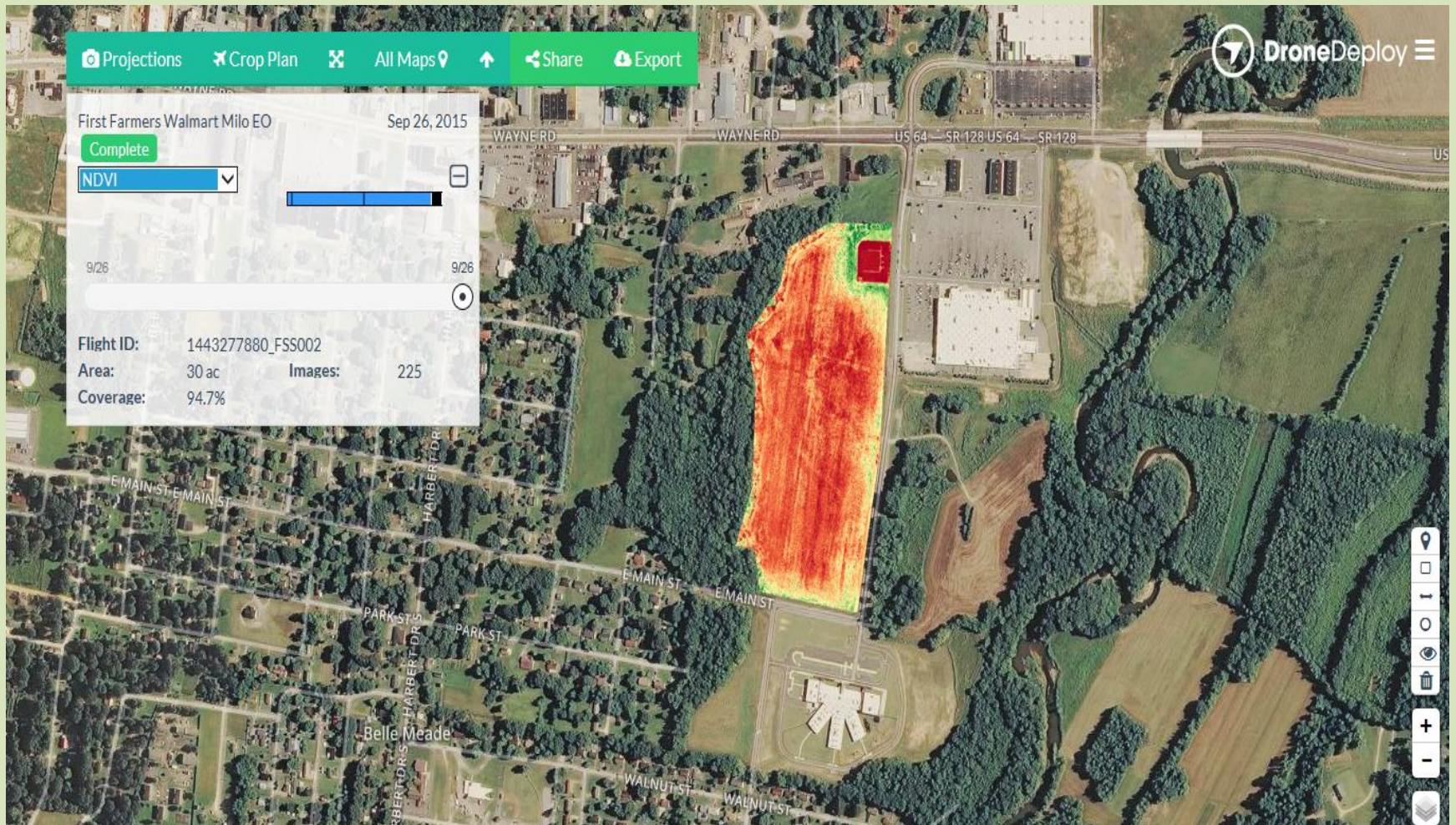
FLIGHT PLAN



INDIVIDUAL IMAGES



STITCHED MAP





WRAP-UP

